

Date : 22/01/2022

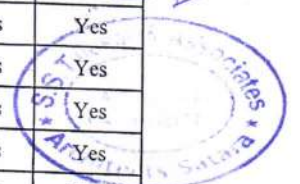
To
Yashoda Shikshan Prasarak Mandal, Satara
Yashoda College of Architecture
S. No. 244, NH-4, Wadhe Phata , Satara.

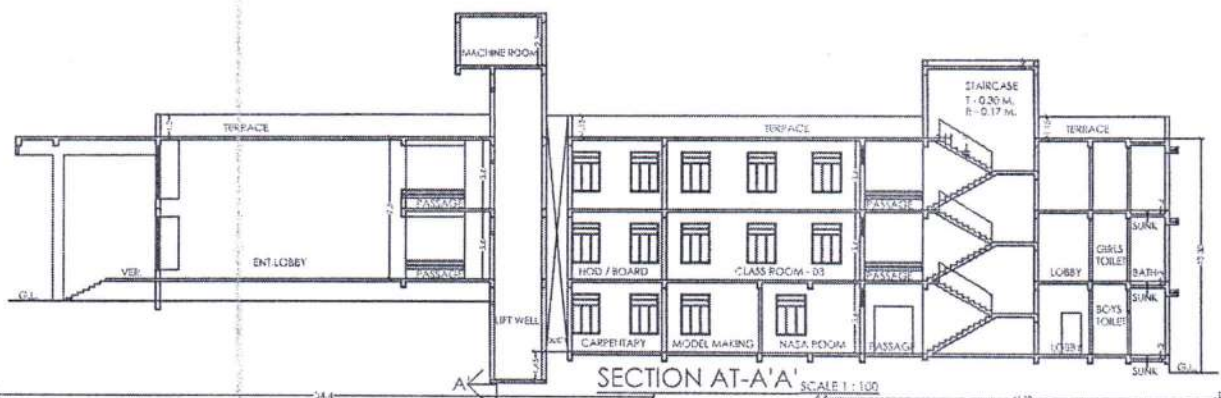
Built Up Area Details

Sr. No	Room No.	Building Name	Building Number	Room type (mention class room / lab / Toilet etc)	Carpet area (in sq. m)	Readiness of Flooring	Readiness of Walls and Painting	Readiness of Electrification and lighting	Readiness of Furniture & Fixtures
1	101	C	3	Multipurpose Hall	400.00	Yes	Yes	Yes	Yes
2	102	C	3	Cafeteria	154.12	Yes	Yes	Yes	Yes
3	103	C	3	Gents Toilet	50.00	Yes	Yes	Yes	Yes
4	104	C	3	Workshop Area	200.00	Yes	Yes	Yes	Yes
5	105	C	3	Gymkhana	151.30	Yes	Yes	Yes	Yes
7	107	C	3	Resource Centre	150.00	Yes	Yes	Yes	Yes
8	108-A	C	3	Central Store	30.00	Yes	Yes	Yes	Yes
9	108-B	C	3	Maintenance	16.40	Yes	Yes	Yes	Yes
10	108-C	C	3	Stationary	16.40	Yes	Yes	Yes	Yes
11	109	C	3	Student Center	76.00	Yes	Yes	Yes	Yes
12	201	C	3	Studio 1	150.52	Yes	Yes	Yes	Yes
13	202	C	3	Studio 2	150.00	Yes	Yes	Yes	Yes
14	203	C	3	Studio 3	152.25	Yes	Yes	Yes	Yes
15	204	C	3	Class Room 1	75.37	Yes	Yes	Yes	Yes
16	205	C	3	HOD/Board Room	36.07	Yes	Yes	Yes	Yes
17	206	C	3	Class Room 3	75.00	Yes	Yes	Yes	Yes
18	207	C	3	Class Room 2	75.37	Yes	Yes	Yes	Yes
19	208	C	3	Laboratory - 1	100.00	Yes	Yes	Yes	Yes
20	209	C	3	Laboratory - 2	100.00	Yes	Yes	Yes	Yes
21	210-A	C	3	Girls Common Room	45.24	Yes	Yes	Yes	Yes
22	210-B	C	3	Boys Common Room	37.85	Yes	Yes	Yes	Yes
23	211	C	3	Ladies Toilet	50.00	Yes	Yes	Yes	Yes
24	212	C	3	Library & Reading Room	185.00	Yes	Yes	Yes	Yes
25	213	C	3	Studio 5	120.00	Yes	Yes	Yes	Yes
26	214	C	3	Classroom - 4	75.00	Yes	Yes	Yes	Yes
27	215	C	3	Material Museum	75.00	Yes	Yes	Yes	Yes
28	216	C	3	Principal Cabin	38.25	Yes	Yes	Yes	Yes
29	217	C	3	Submission & Exam Room	38.25	Yes	Yes	Yes	Yes
30	218	C	3	Faculty Room	75.00	Yes	Yes	Yes	Yes
31	219	C	3	Studio 4	152.25	Yes	Yes	Yes	Yes
32	220	C	3	Computer Center and Language	150.00	Yes	Yes	Yes	Yes
33	221A	C	3	Office Area	75.00	Yes	Yes	Yes	Yes
34	221B	C	3	Staff Lounge	75.00	Yes	Yes	Yes	Yes
35	222	C	3	Exhibition/ Art Court	150.00	Yes	Yes	Yes	Yes
36	223	C	3	Construction Yard	200.00	Yes	Yes	Yes	Yes
Total					3700.64				

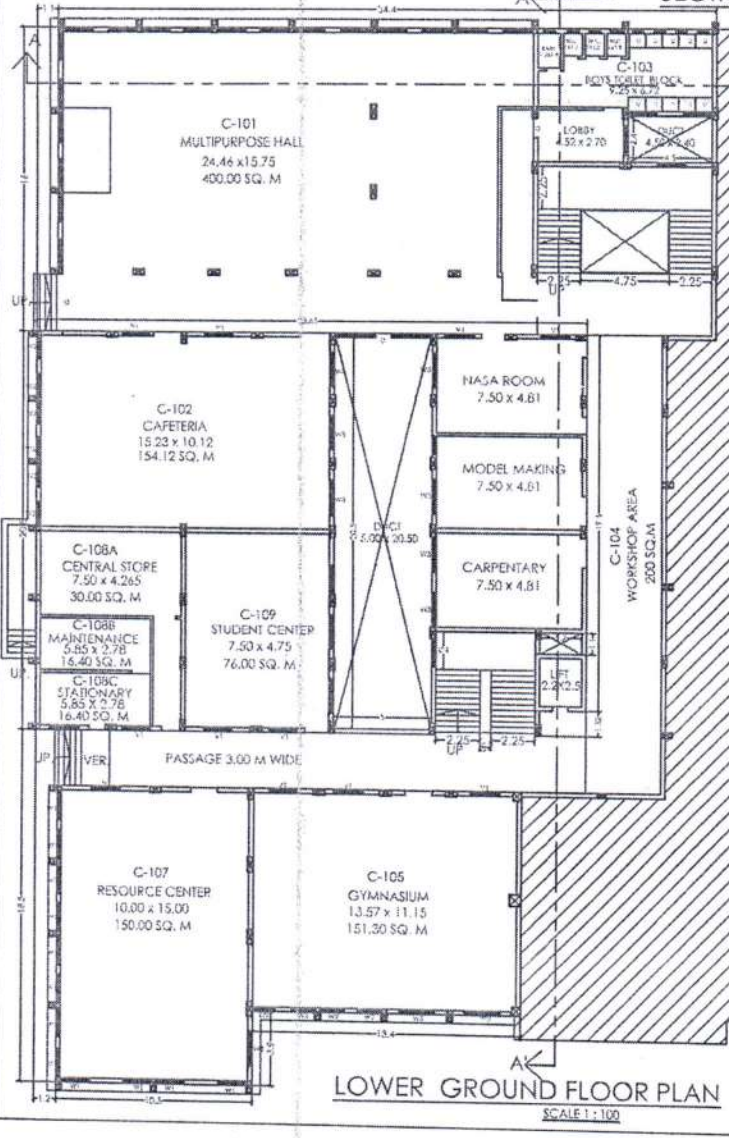


Suhaz S. Talekar

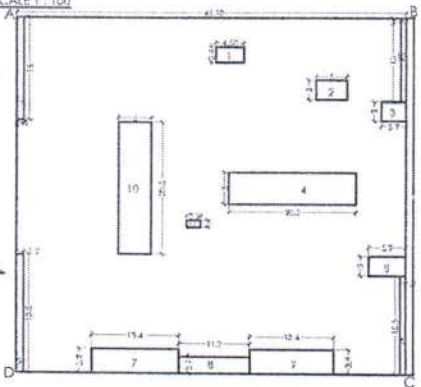




SECTION AT-A-A' SCALE 1:100



LOWER GROUND FLOOR PLAN SCALE 1:100



BUILT-UP AREA STATEMENT

TYPICAL ROOMS FIRST & SECOND FLOOR PLAN SCALE 1:300

AREA OF BLOCK ABCD = 81.1 X 55.5 = 4506.85 SQ.M.

DEDUCTIONS -

1. 4.80 X 2.40 = 11.52 SQ.M
2. 3.00 X 3.00 = 9.00 SQ.M
3. 3.90 X 3.00 = 11.70 SQ.M
4. 20.2 X 5.00 = 101.0 SQ.M
5. 5.90 X 3.00 = 17.70 SQ.M
6. 0.90 X 15.5 = 13.95 SQ.M
7. 15.4 X 3.90 X 2 = 124.52 SQ.M
8. 11.2 X 2.70 = 30.24 SQ.M
9. 1.20 X 18.5 = 22.20 SQ.M
10. 5.00 X 20.5 = 102.5 SQ.M
11. 2.20 X 1.10 = 2.42 SQ.M
12. 1.10 X 16.0 = 17.60 SQ.M
13. 0.90 X 18.0 = 16.20 SQ.M

TOTAL DEDUCTIONS = 401.33 SQ.M.

NET AREA = 3378.80 = 401.33 = 2917.50 SQ.M.

GROUND FLOOR BU AREA = 2917.50 SQ.M.

ADD VERANDA 11.50 X 4.00 = 46.00 SQ.M.

TOTAL GROUND FLOOR BU AREA = 2963.50 SQ.M.

FIRST FLOOR BU AREA = 2917.50 SQ.M.

SECOND FLOOR BU AREA = 2917.50 SQ.M.

DOOR & WINDOW SCHEDULE

D 1.20 X 2.10	W1 1.20 X 2.10
D1 1.20 X 2.10	W2 1.80 X 2.10
D2 0.90 X 2.10	W3 0.90 X 2.10
D3 0.45 X 2.10	V 0.40 X 0.80
D4 2.00 X 2.00	V1 1.80 X 0.80
D5 1.50 X 2.40	V2 0.80 X 1.20
D6 3.00 X 2.40	W4 4.20 X 2.10
	W5 2.40 X 2.10

AREA STATEMENT

ENCL. GULF. SUP. AREA	= 2942.50 SQ.M
ENCL. F. FL. SUP. AREA	= 2917.50 SQ.M
PROF. S. FL. SUP. AREA	= 2917.50 SQ.M
TOTAL PROF. SUP. AREA	= 8777.50 SQ.M

SPECIFICATION

R.C.C. FRAMED STRUCTURE

FOUNDATION 20 CM THK. & 10 CM WALL

FOUNDATION 15 CM WARD STRATA

EMASH THROUGH LIFT SHAFT

ADAPRE INSULATED FLOORING

EXTERNAL PAINT FACE PLASTER

INTERNALLY MESHU FINISH PLASTER

ALL MATERIALS ARE USED AS PER ISI SPECIF.



OWNER: SGT

ARCHITECT: SGT

JOB TITLE: RECORD PLAN OF BUILDING FOR FASHODA COLLEGE OF ARCHITECTURE, 13ND-2407-24072, 548A, 344-24072454 24072454/24072454 AT - WADHE, TAL & DIST. - SATARA, FOR YASHODA SHIKHAN PRAJAPAT MANDAL, SATARA

REGISTERED & INDEPENDENT DESIGNER

S. TALEKAR & ASSOCIATES

AN. TELKATALEKAR
CH. TELKATALEKAR
CH. TELKATALEKAR
CH. TELKATALEKAR
CH. TELKATALEKAR

YASHODA SHIKHAN PRAJAPAT
SATARA, SATARA

PH. NO. - 22110, 22115, 22116, 22117, 22118, 22119

Principal
Yashoda College of Architecture
Satara

